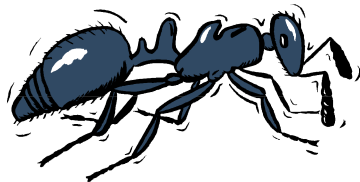


Apple
and
an ant



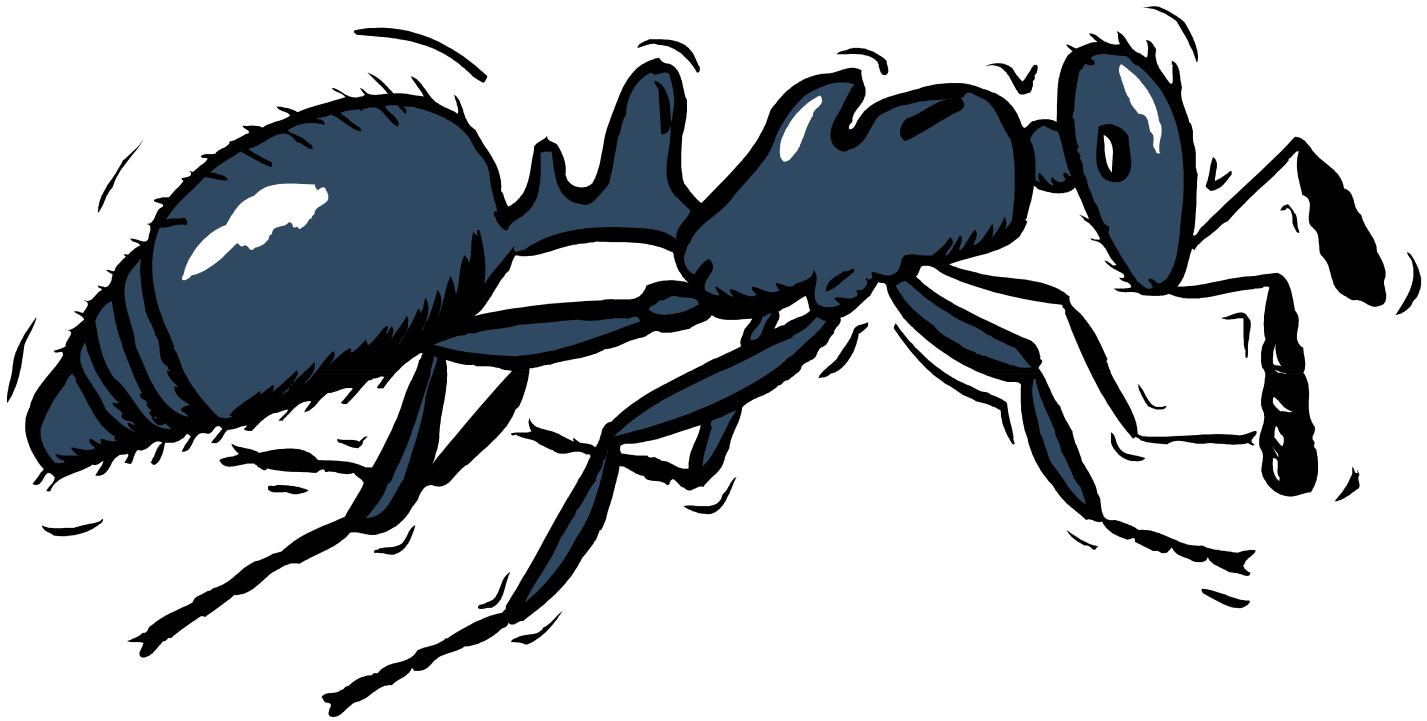
—with thanks to Nancy Stewart

A



Apple

a



ant

B



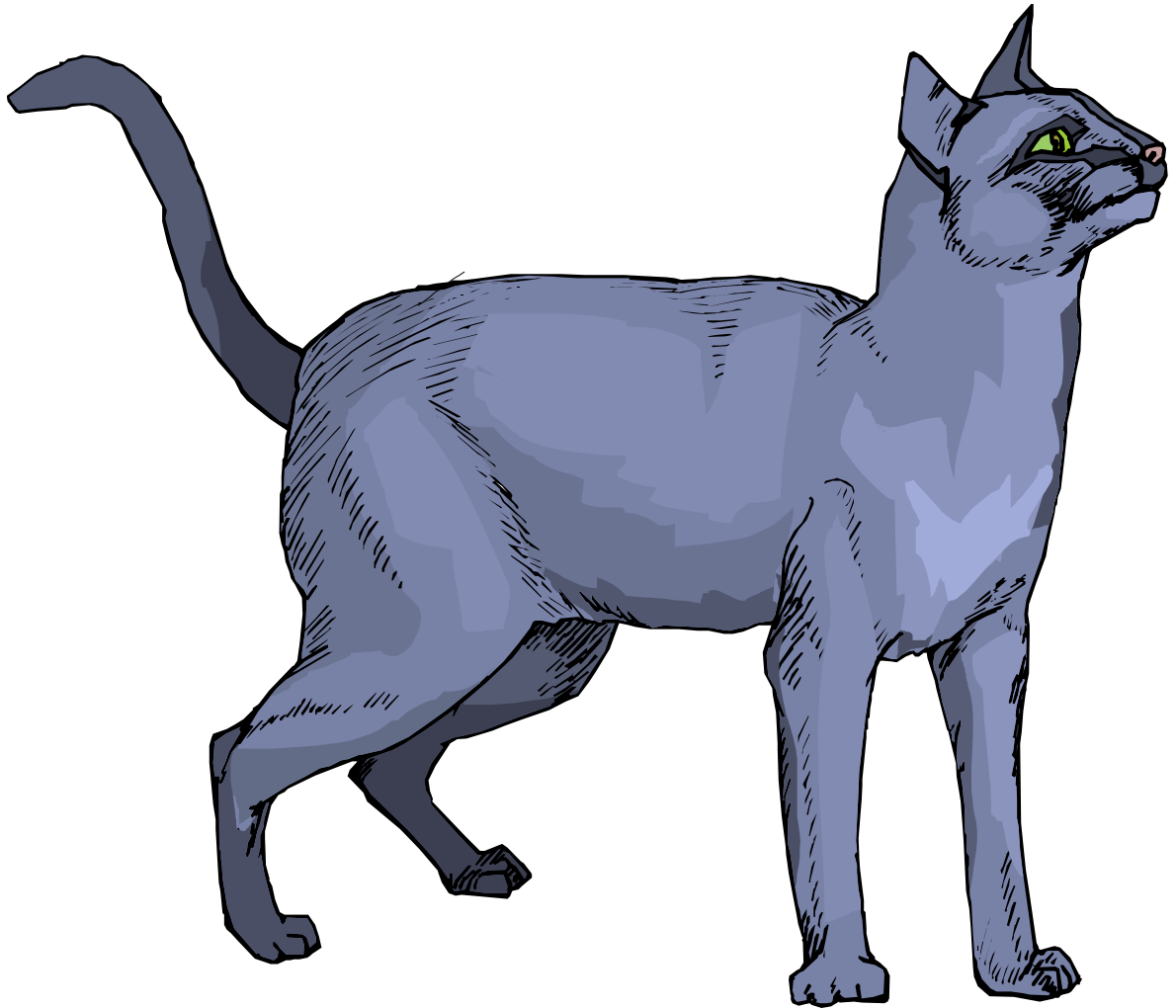
Baby

b



ball

C



Cat

C



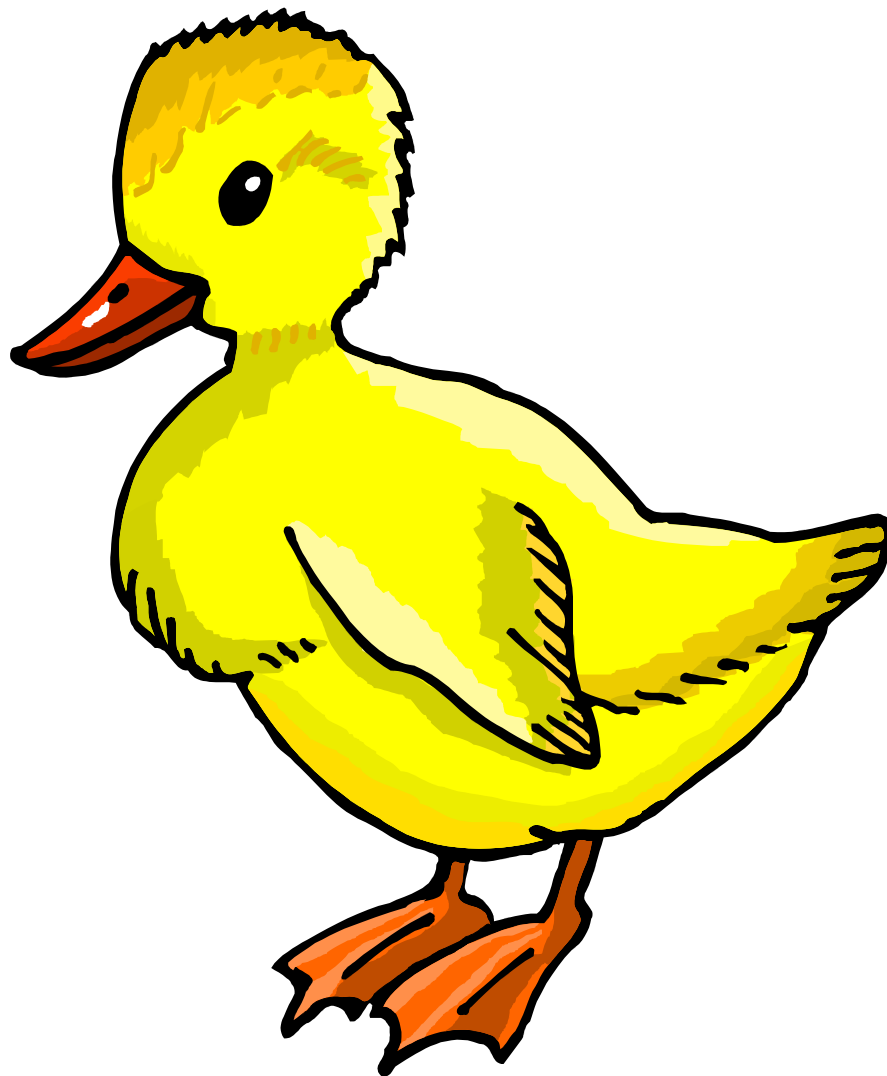
COW

D



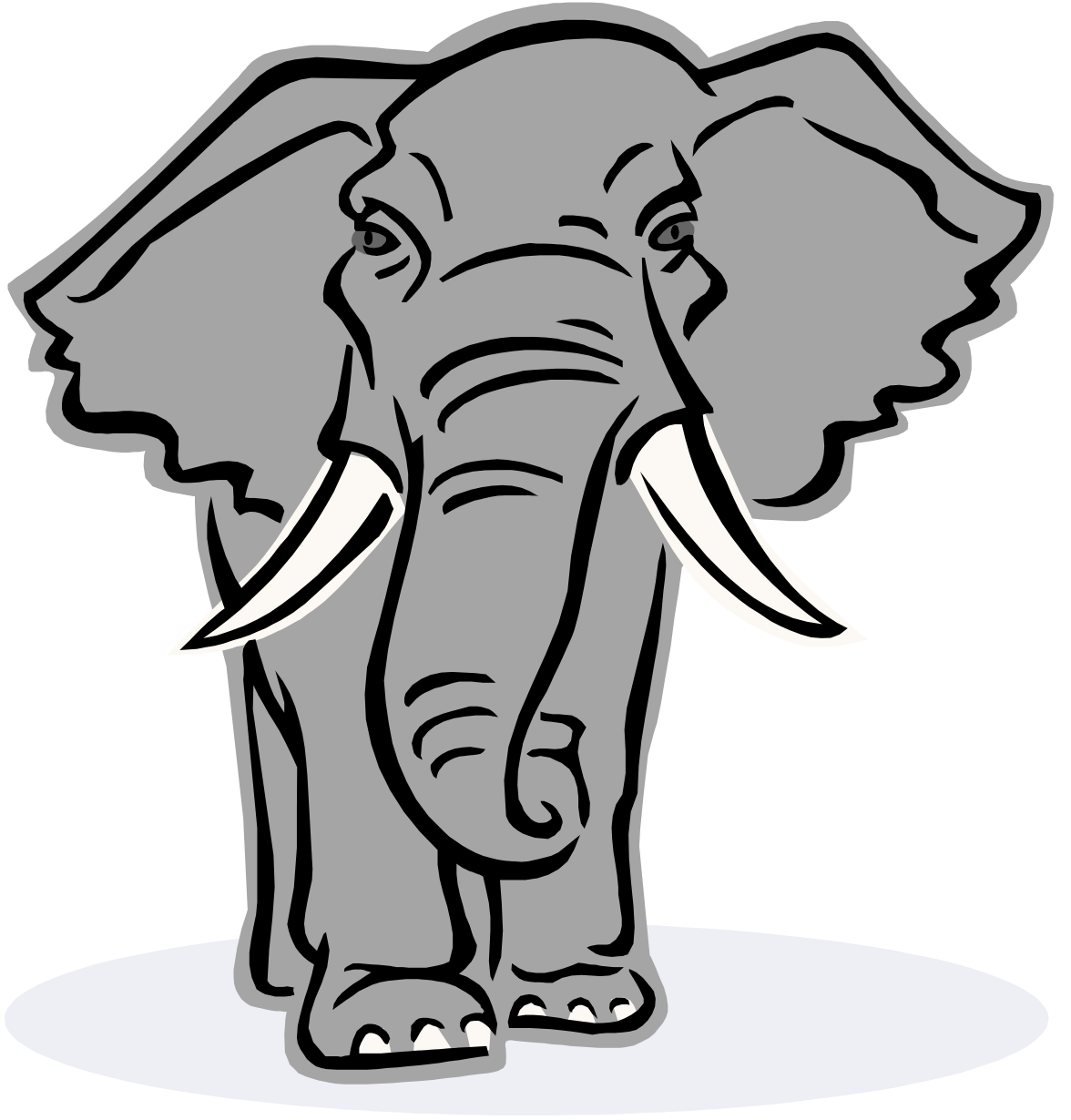
Dog

d



duck

E



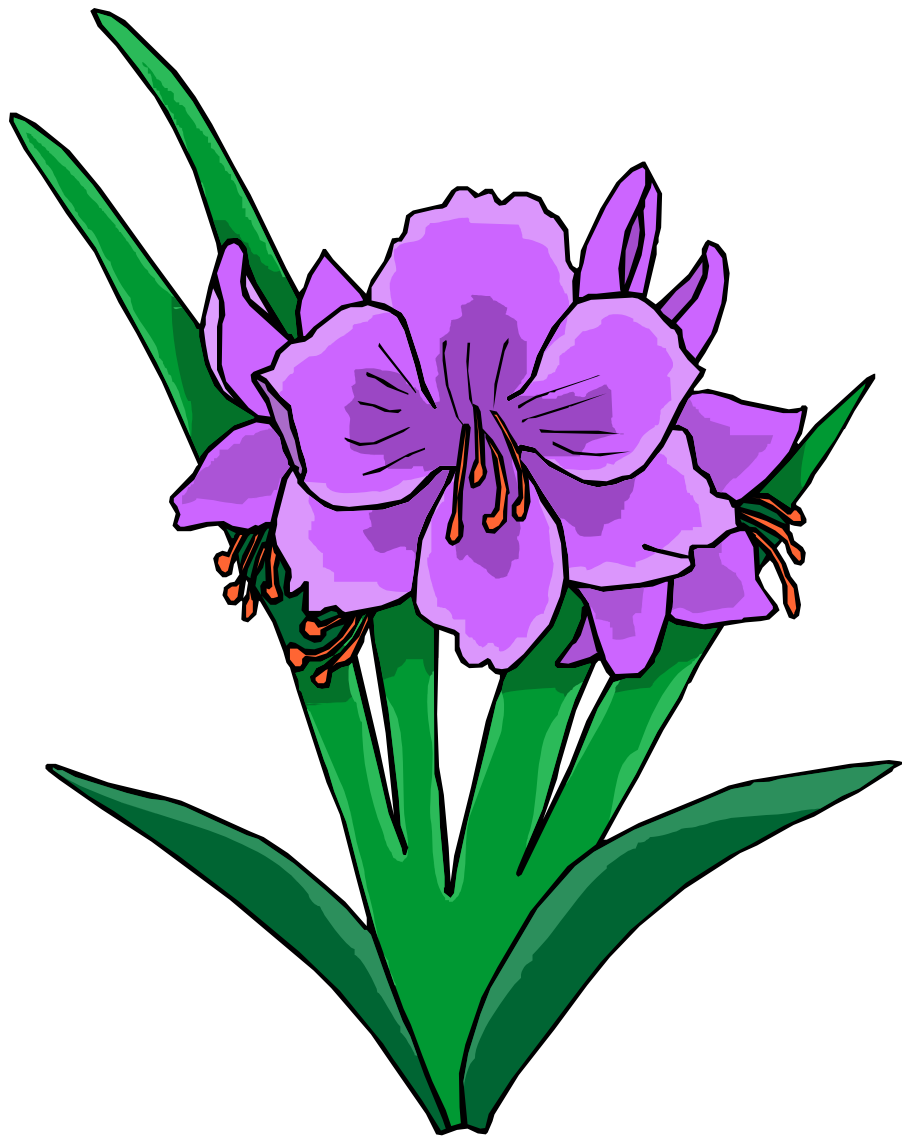
Elephant

e



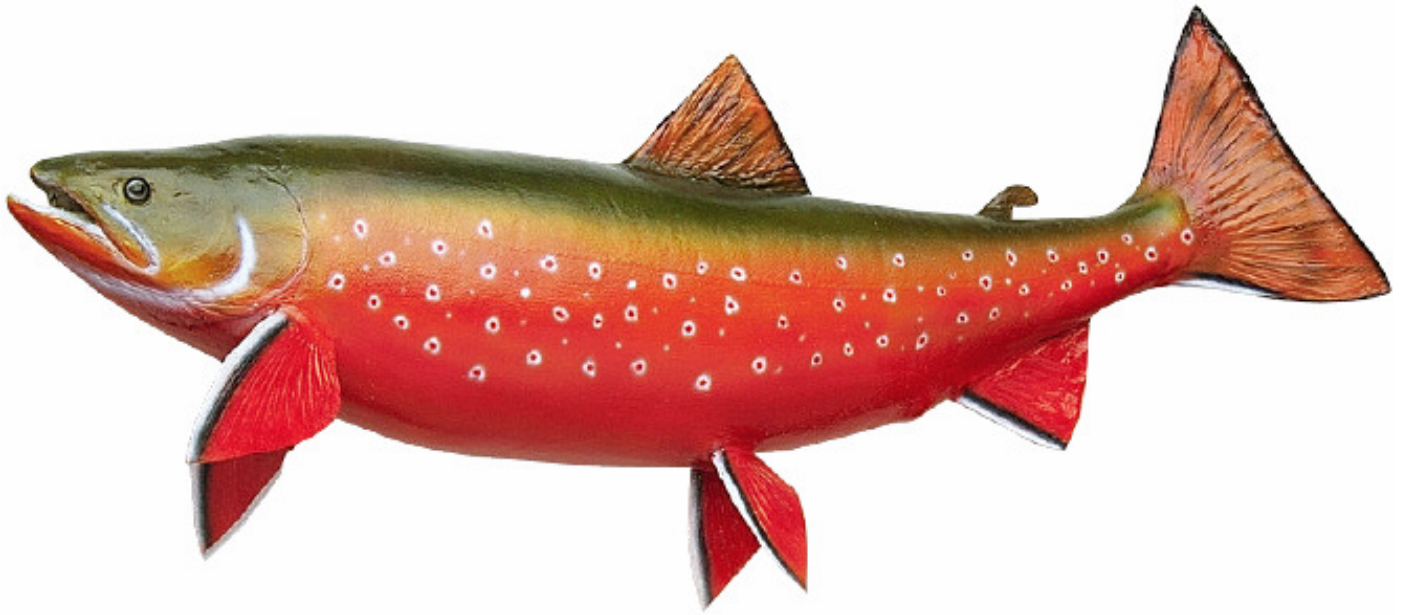
eagle

F



Flower

f



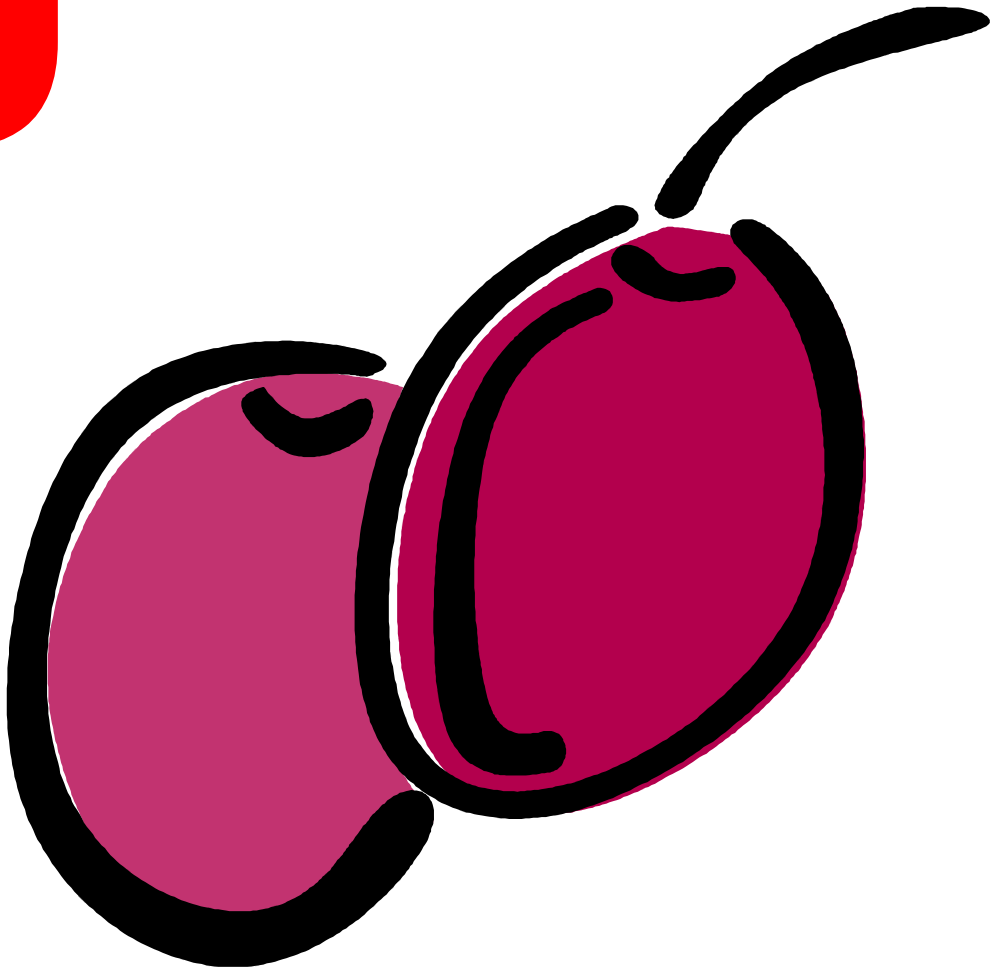
fish

G



Grass

g



grape

H



Horse

h



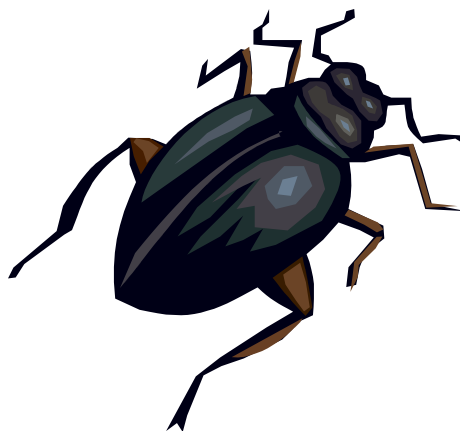
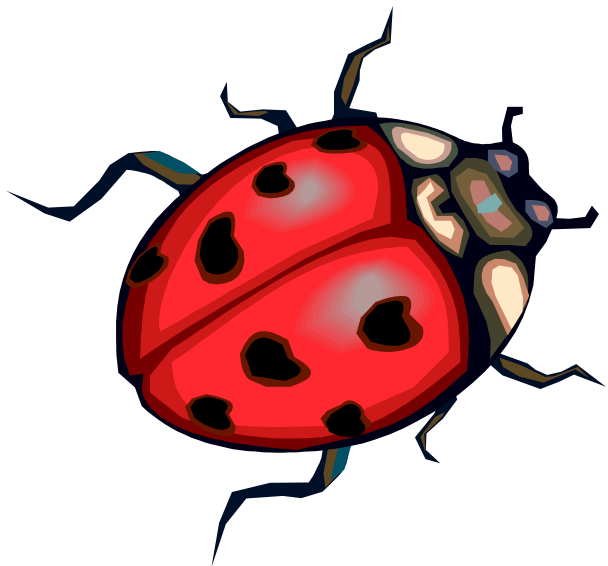
horn

I



Ice cream

i



i insect

J



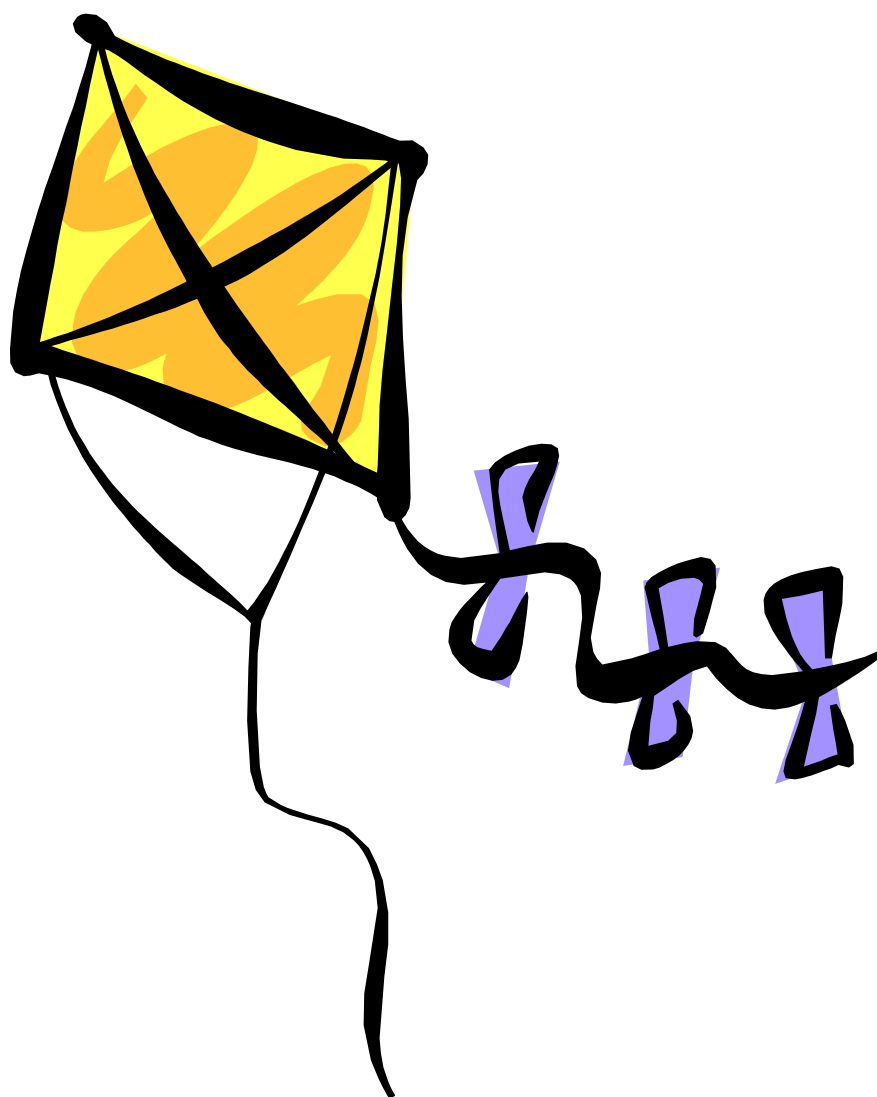
Jar

j



juice

K



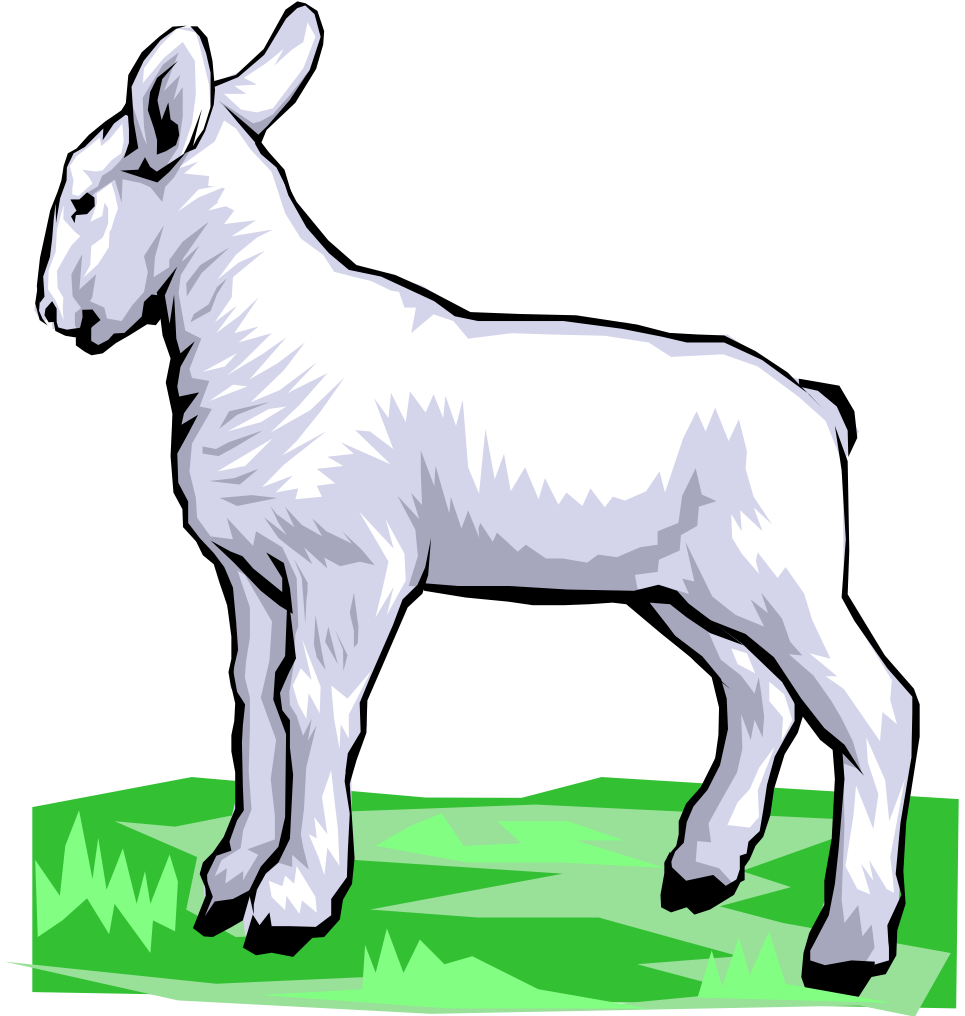
Kite

k



key

L



Lamb



lion

M



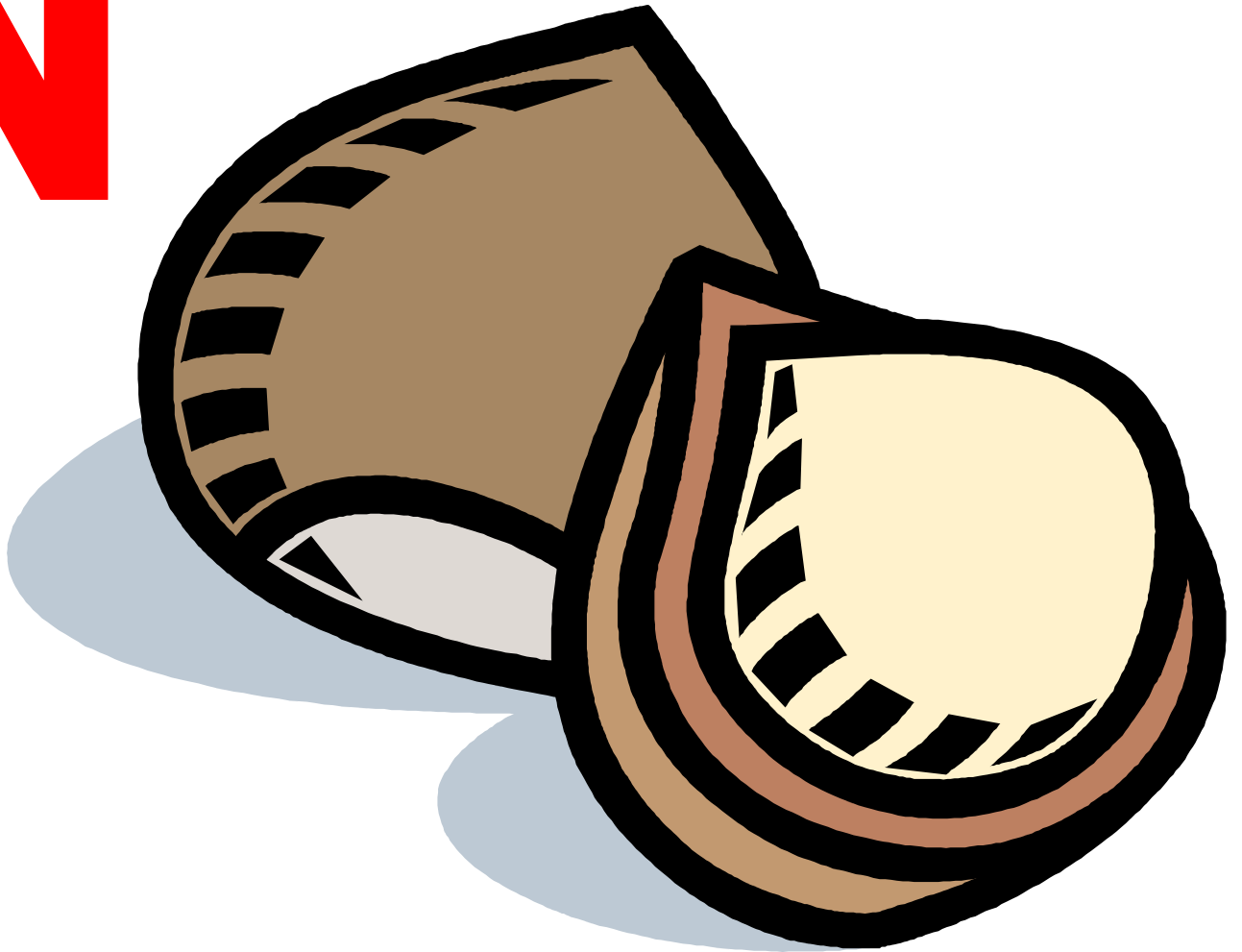
Mail

m



mice

N



Nut

n



nail

O



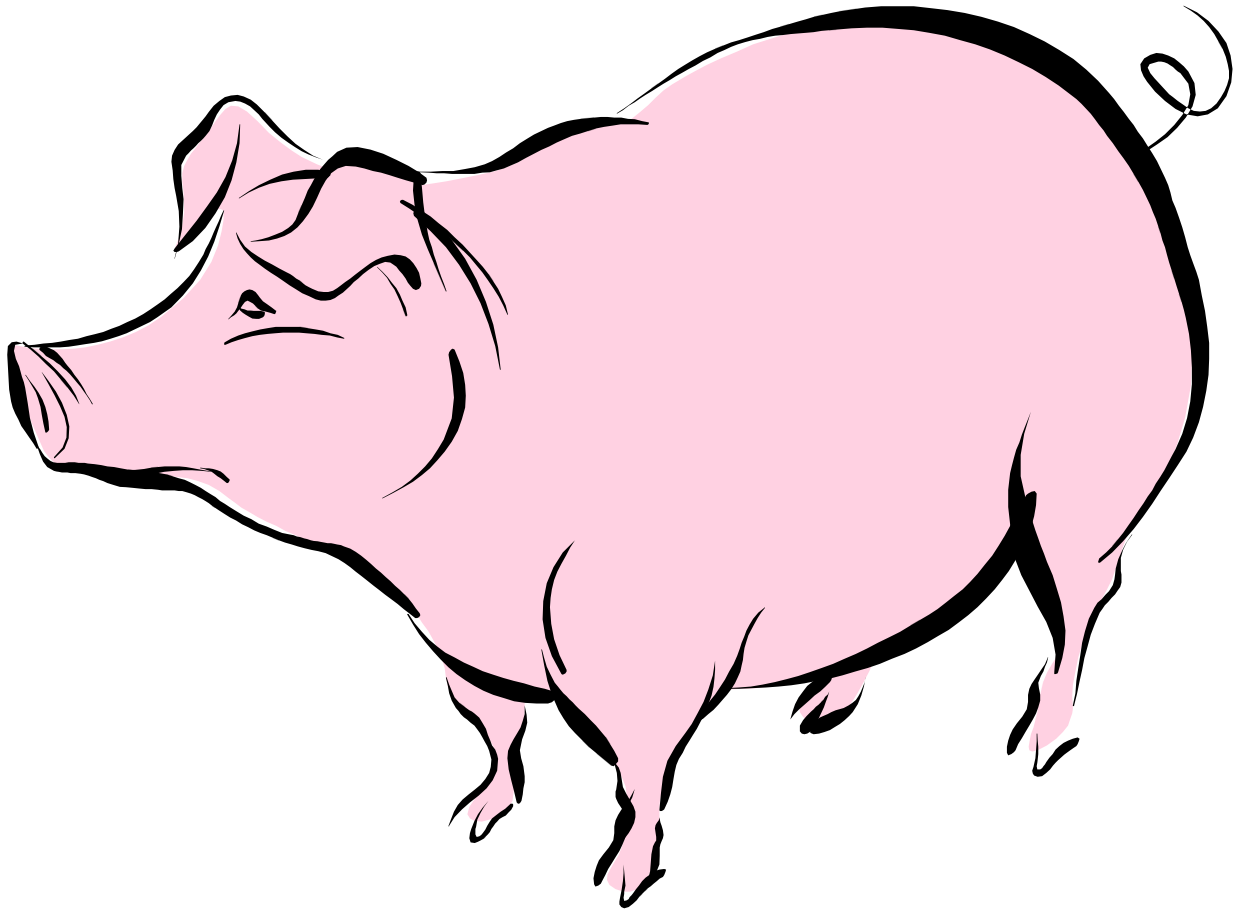
Owl

O



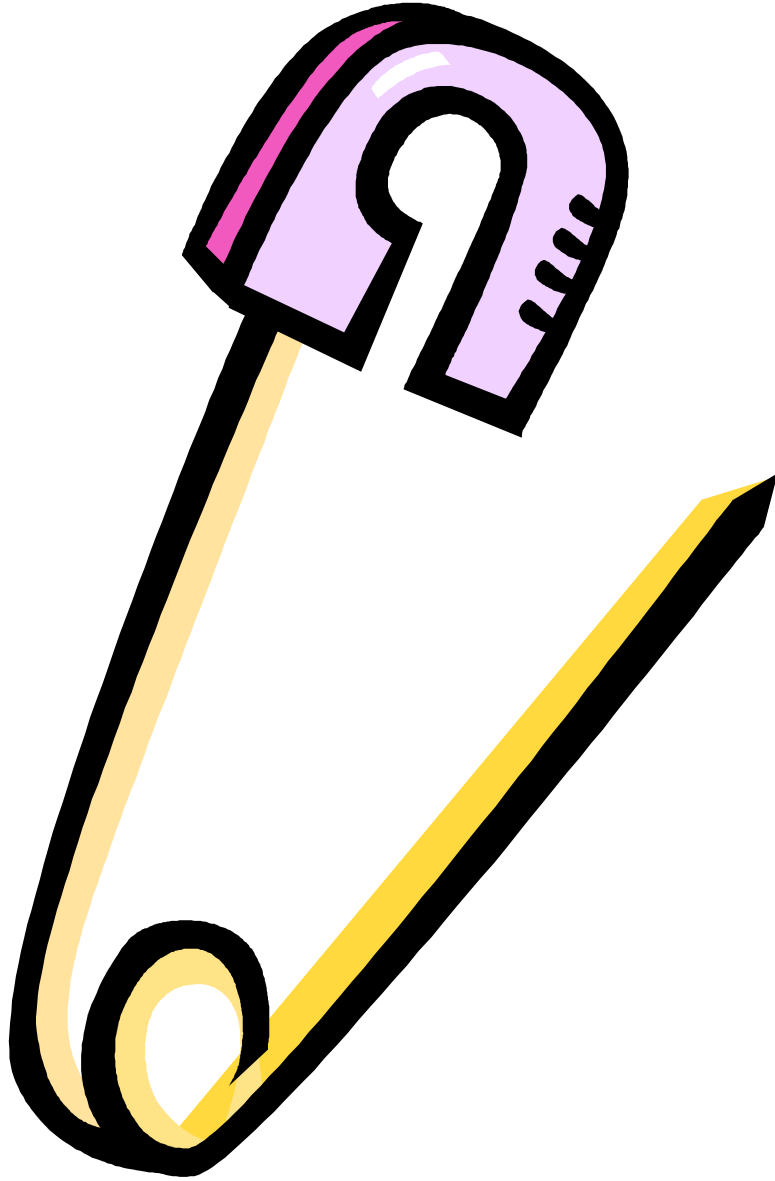
onion

P



Pig

p



pin

Q



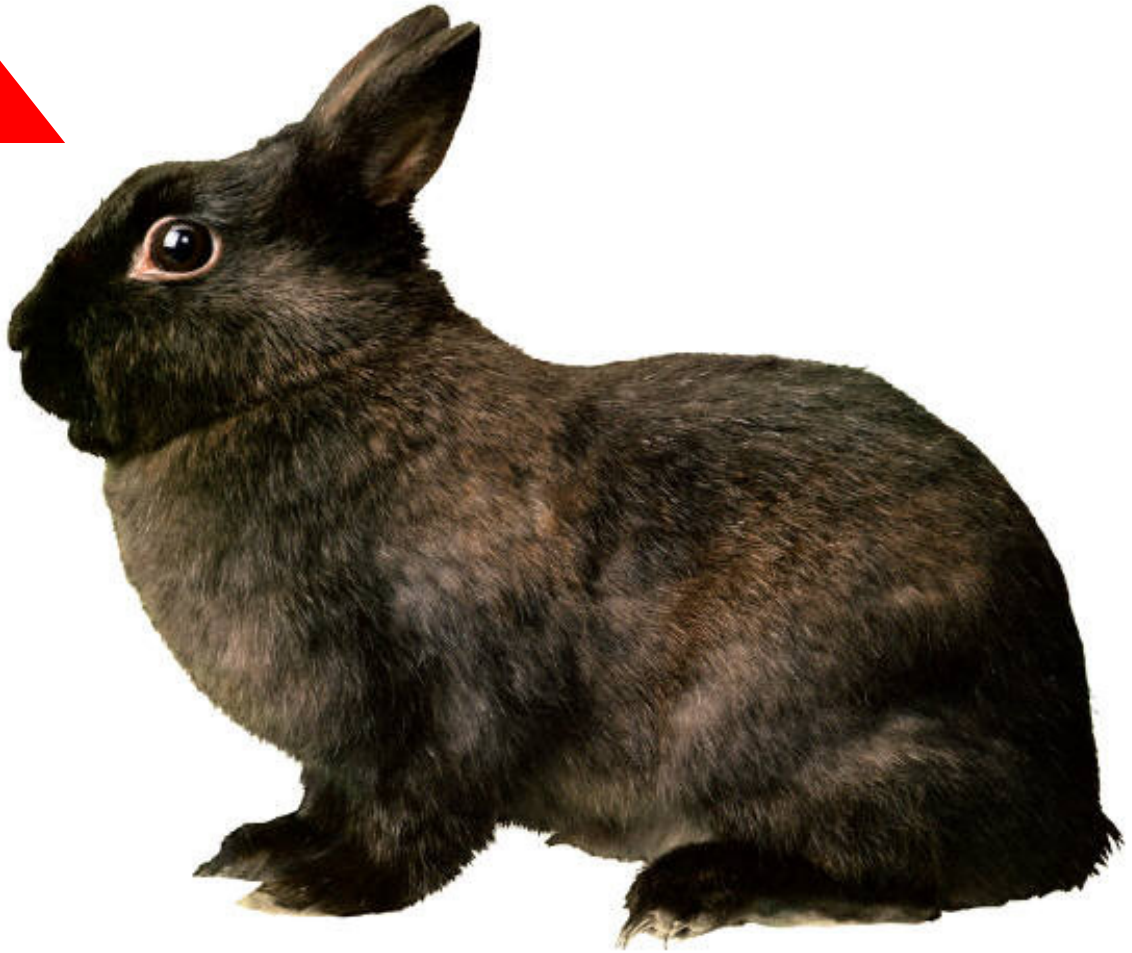
Queen

q



quarter

R



Rabbit

r



ring

S



Seal

S



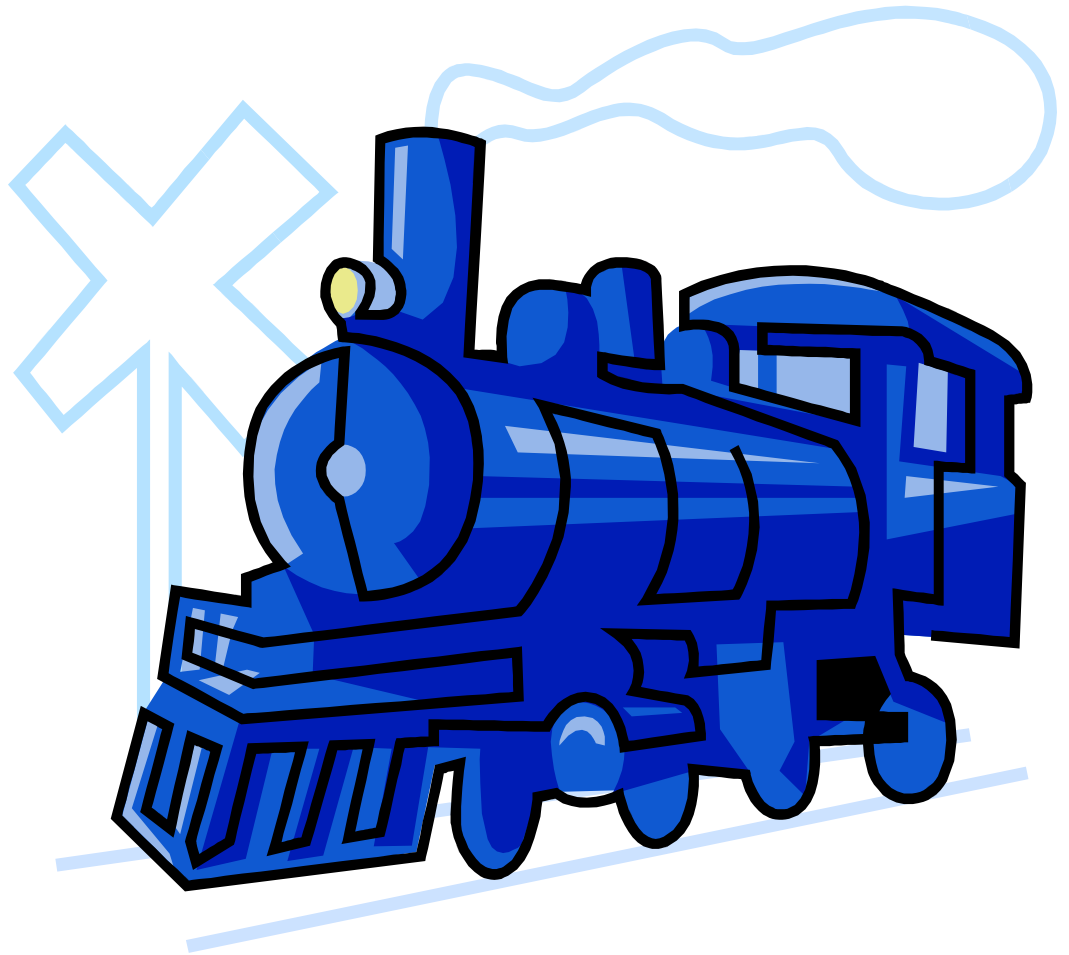
saw

T



Tiger

t



train

U



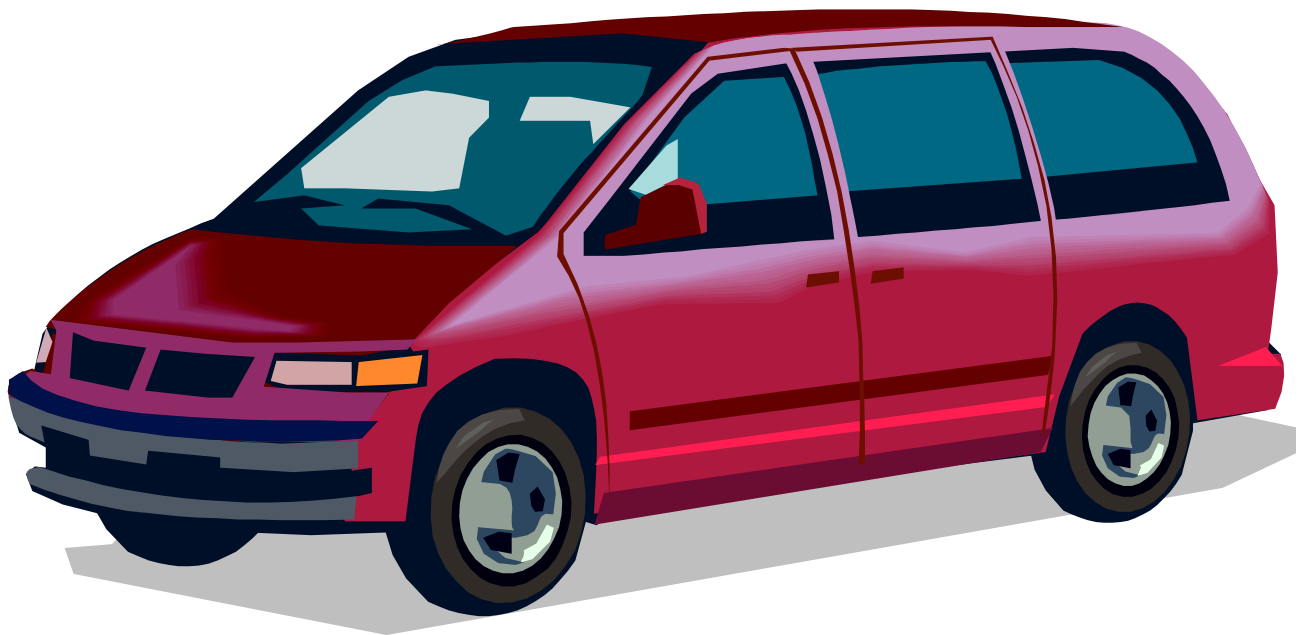
Umbrella

u



uncle

V



van

V



vase

W



wagon

W



worm

X



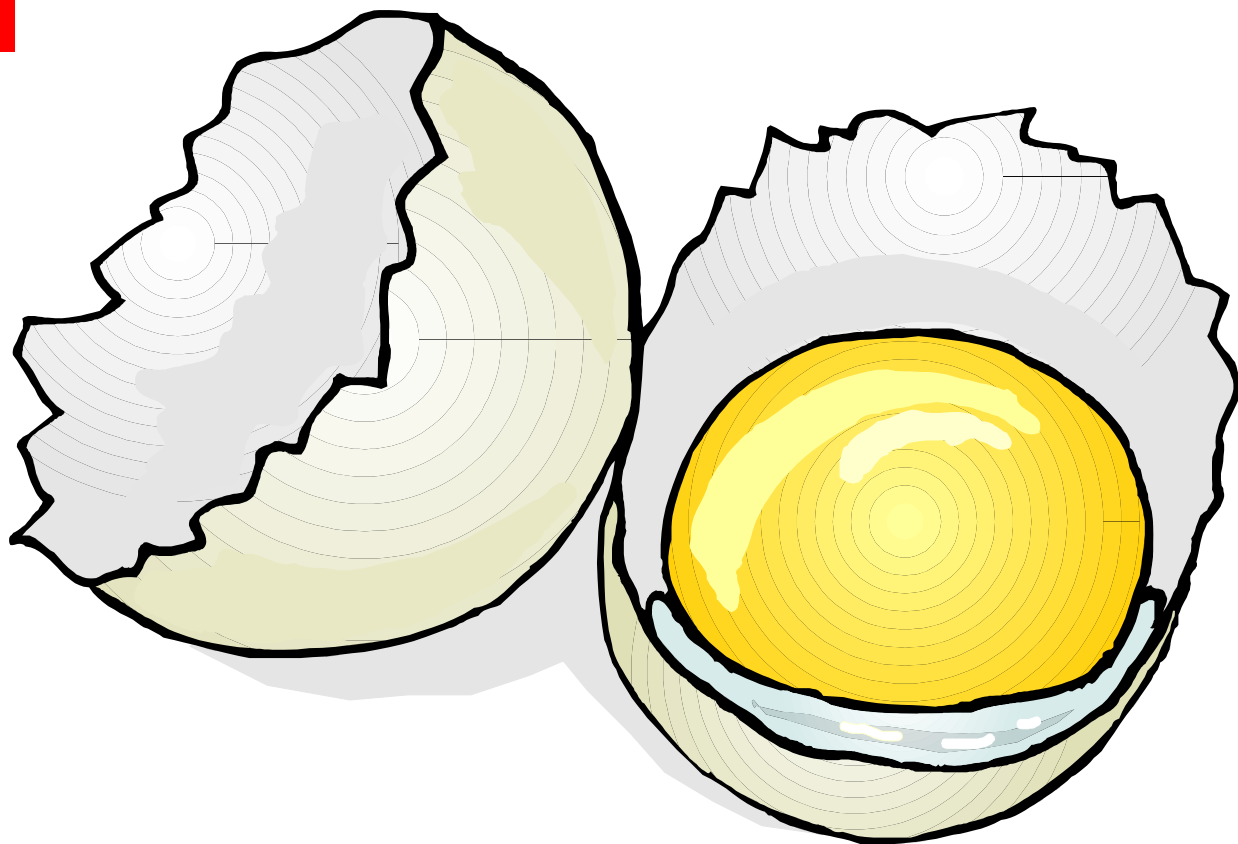
X-ray

X



xxylophone

Y



yolk

Y



yak

Z



Zipper

Z



zoo